

# KE300A-01

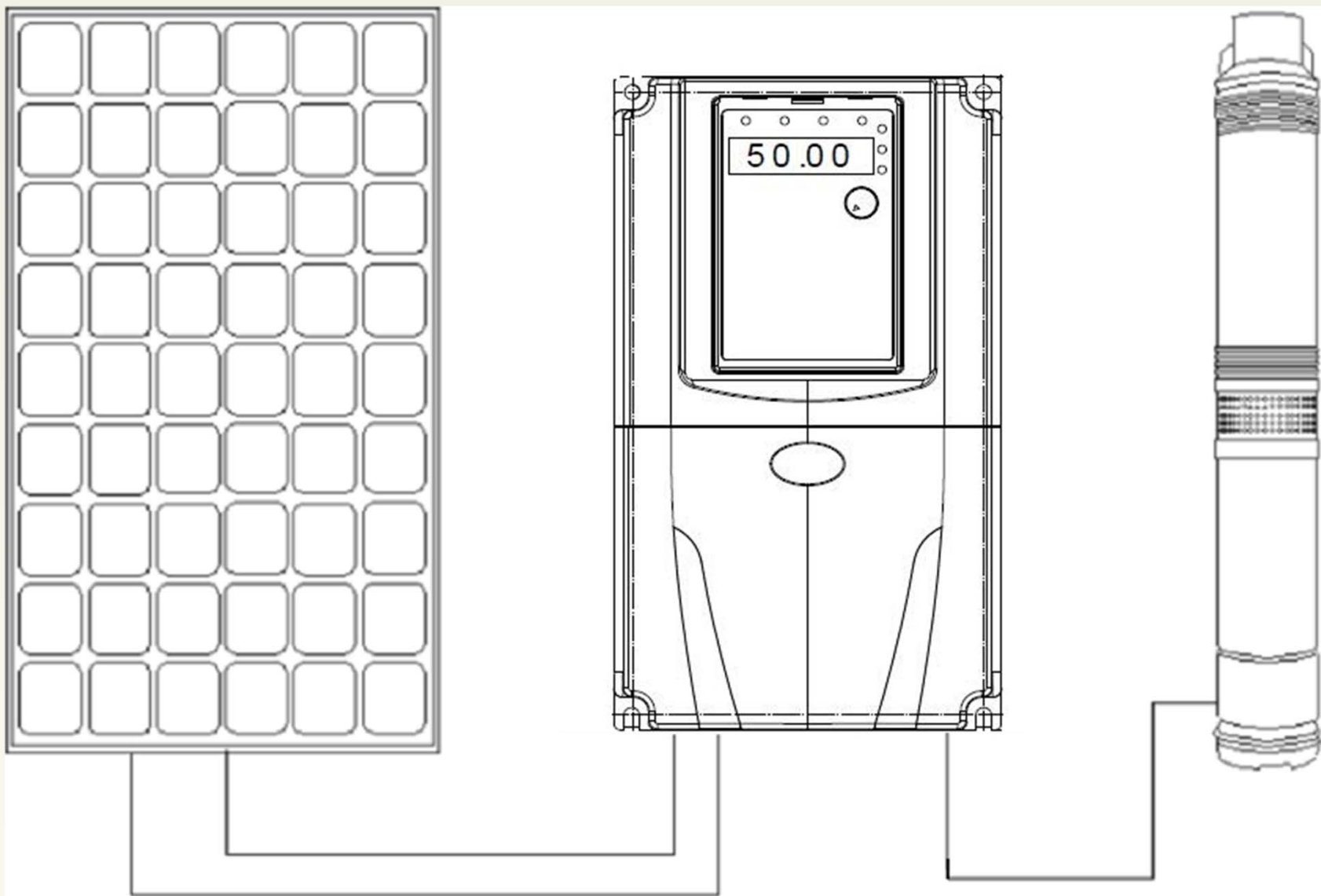
## Solar pump inverter



220V 1 Phase **0.4-5.5kw**

220V 3 Phase **0.4-5.5kw**

380V 3 Phase **0.75-110kw**



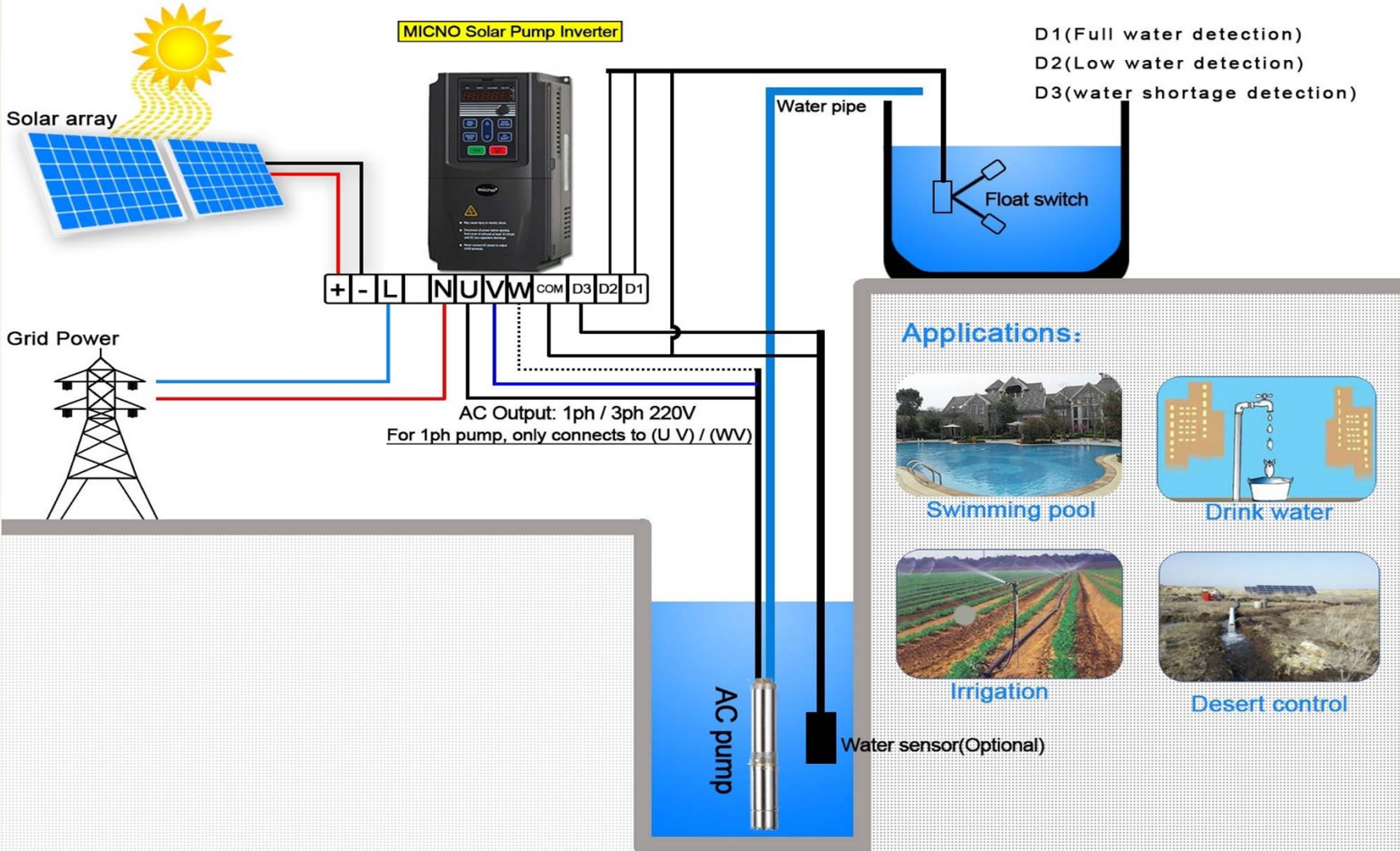
# Introduction

**KE300A-01 Series** solar pumping inverter Can control of solar pumping system operation, which drives the pump by converting DC power produced by the solar array to AC power.

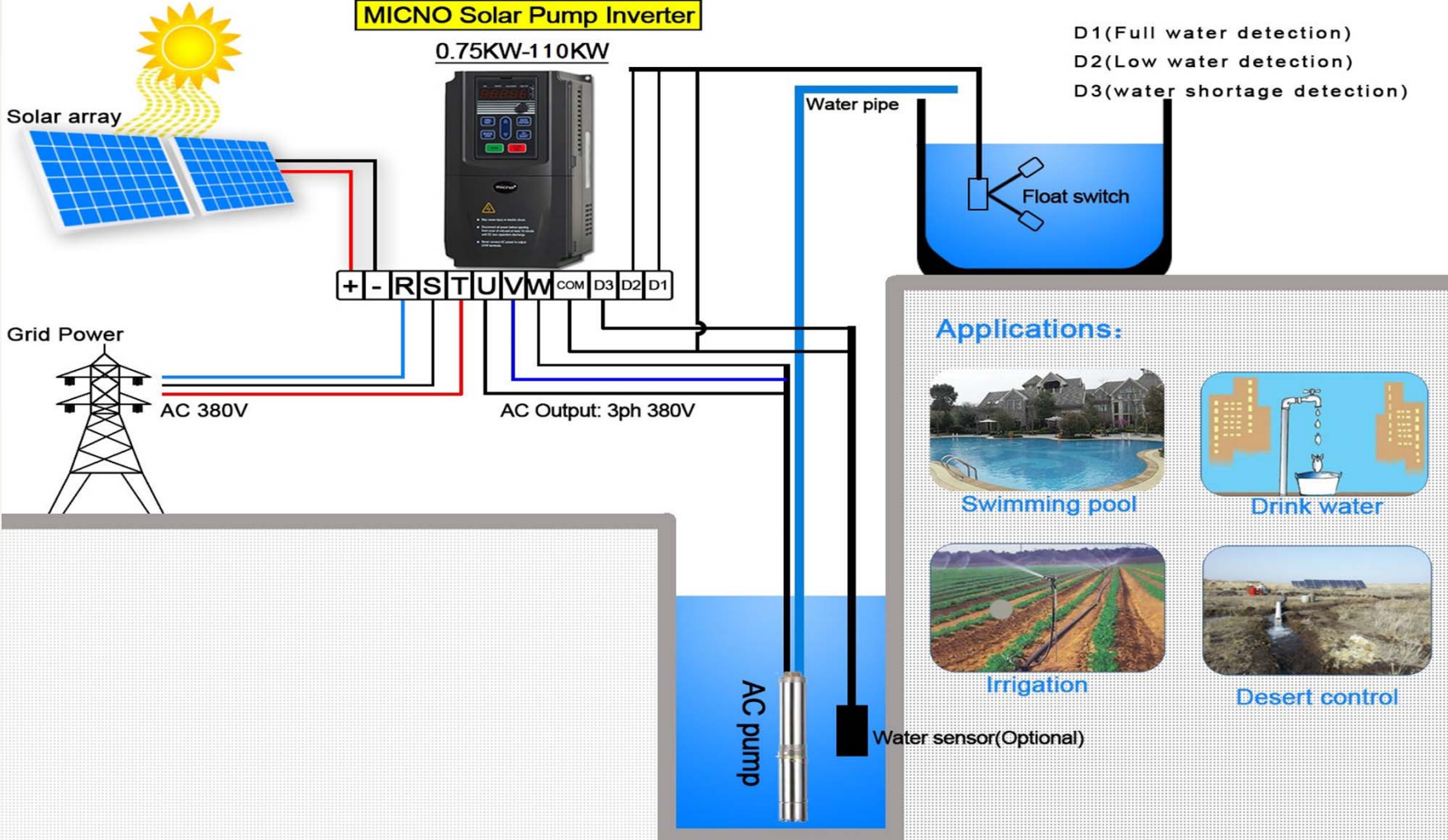
The inverter can adjust the output frequency according to the solar radiation in real time to realize the MPPT (maximum power point tracking).

Max input DC voltage (Open circuit voltage)	<b>1P/3P 220~240VAC: 400VDC</b> <b>3P 380~460VAC: 750VDC</b>
Recommended input voltage	<b>1P/3P 220~240V: 280~400VDC</b> <b>3P 380~460V: 500~750VDC</b>
Inverter efficiency	> 95%
MPPT efficiency	99.9%
Output frequency range	0~50/60Hz
Protection degree	IP20
Standard	CE

# Solar Pumping system (Output : 1P/3P 220~240AC)



# Solar Pumping system (Output : 3P 380~460VAC)



# Features

## Smartness

- ★ Independent intellectual property of dynamic VI maximum power point tracking (MPPT) algorithm. Fast response and good stability. 99% MPPT efficiency.

- ★ Integrated with water level monitor to prevent overflow and dry running.

- ★ Free setting of pump operating frequency range.

## High Effective

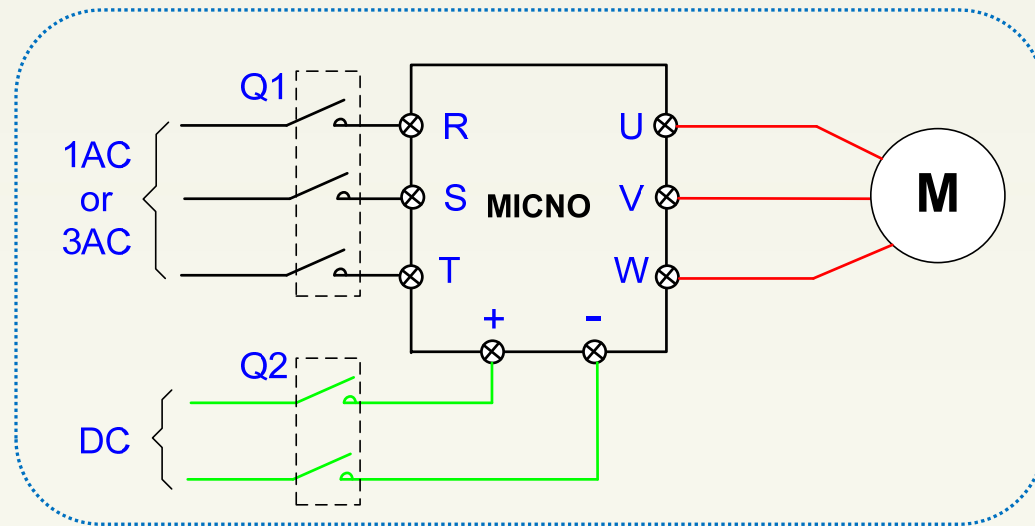
- ★ Perfectly adapted to wide input voltage range. Multiple options for solar array design.

- ★ Suitable for all kinds of motor pumps.

# Features

**Compatible with both  
DC & AC  
input**

- ★ Humanism design
- ★ Compatible with both DC & AC input



## Selection guide (220V level)

Model	Rated Output power (kW)	MPPT Voltage Range (VDC)	Rated Output current (A)
<b>Single-phase 220~240V</b> output			
KE300A-01-04-0R4G-S2	0.4	280~400	4
KE300A-01-04-0R7G-S2	0.75		7
KE300A-01-04-1R5G-S2	1.5		9.6
KE300A-01-04-2R2G-S2	2.2		15
KE300A-01-04-004G-S2	4.0		23
KE300A-01-04-5R5G-S2	5.5		32



## Selection guide (220V level)

Model	Rated Output power (kW)	MPPT Voltage Range (VDC)	Rated Output current (A)
<b>Three-phase 220~240V output</b>			
KE300A-01-0R4G-S2	0.4	280~400	2.3
KE300A-01-0R7G-S2	0.75		4
KE300A-01-1R5G-S2	1.5		7
KE300A-01-2R2G-S2	2.2		9
KE300A-01-004G-S2	4.0		17
KE300A-01-5R5G-S2	5.5		25

## Selection guide (380V level)

Model	Output power (kW)	MPPT Voltage Range (VDC)	Output current (A)
<b>Three-phase 380~460V output</b>			
KE300A-01-0R7G-T4	0.75	500~750	2.1
KE300A-01-1R5G-T4	1.5		3.8
KE300A-01-2R2G-T4	2.2		6.0
KE300A-01-004G-T4	4.0		9
KE300A-01-5R5G-T4	5.5		13
KE300A-01-7R5G-T4	7.5		17
KE300A-01-011G-T4	11		25
KE300A-01-015G-T4	15		32
KE300A-01-018G-T4	18.5		37
KE300A-01-022G-T4	22		45
KE300A-01-030G-T4	30		60

## Selection guide (380V level)

Model	Output power (kW)	MPPT Voltage Range (VDC)	Output current (A)
<b>Three-phase 380~460V output</b>			
KE300A-01-037G-T4	37	500~750	75
KE300A-01-045G-T4	45		90
KE300A-01-055G-T4	55		110
KE300A-01-075G-T4	75		150
KE300A-01-090G-T4	90		176
KE300A-01-110G-T4	110		210

# Typical application

Mainly used in the field of **agriculture, forestry, irrigation, desert control, musical fountain, urban water.**



# Thank you!



**MICNO always aim to be your mutual benefit partner**